

ACE-D STUDY
Stanford · UIC

etcere

Precision Mental Health
Powered by
Neuroscience

EtCere: Bridging the gap between precision psychiatry research and clinical impact



Stanford
MEDICINE

Center for Precision
Mental Health



IMPACT
Mental Health

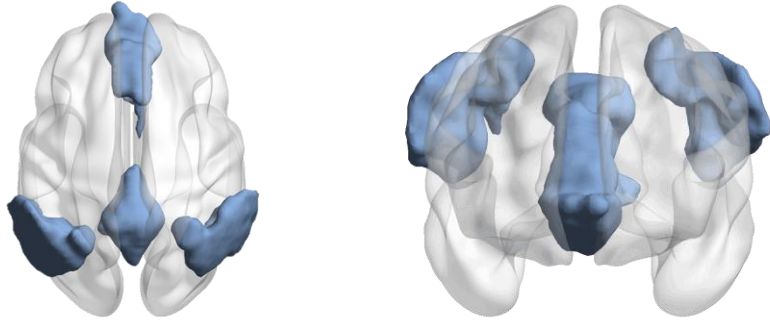
U01 MH136062

EtCere: Bridging the gap between precision psychiatry research and clinical impact

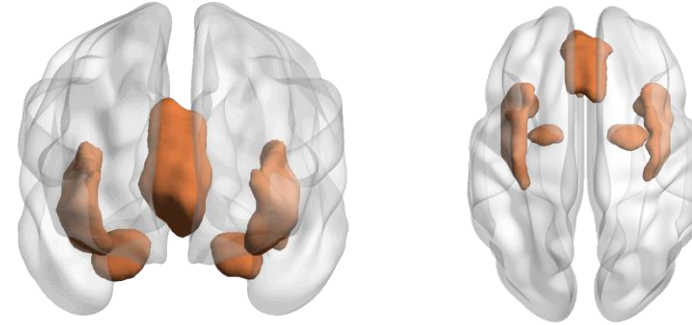
- Depression affects 280 million people globally
- Depression is the leading cause of disability in the U.S.
- Trial and error treatment with only 33% achieving remission



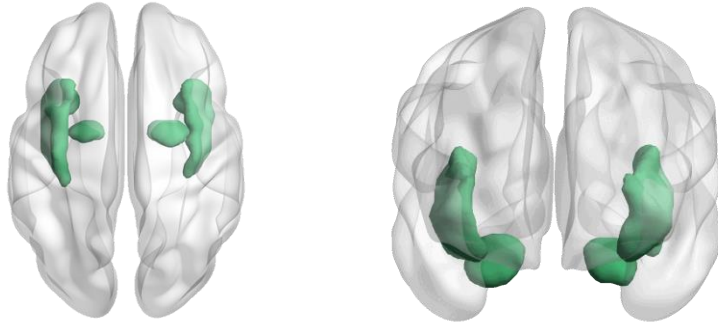
Default Mode



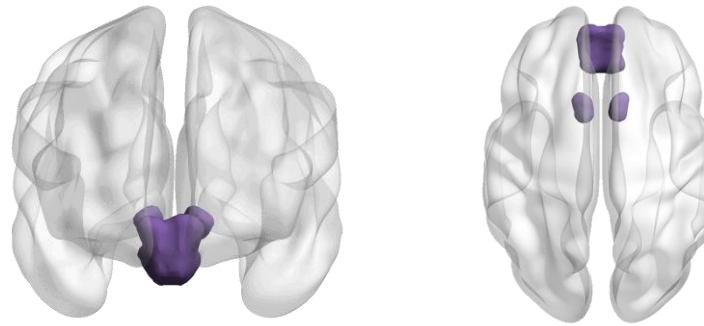
Negative Affect



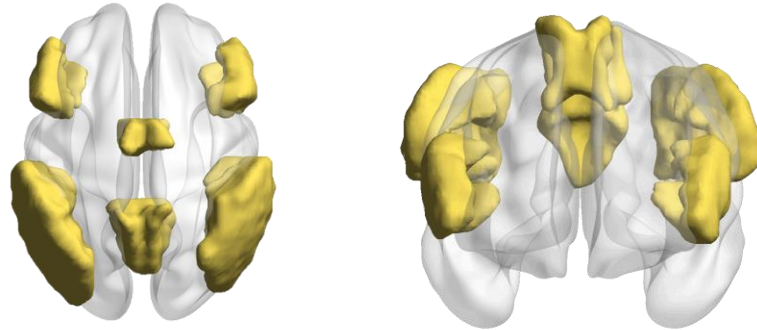
Salience



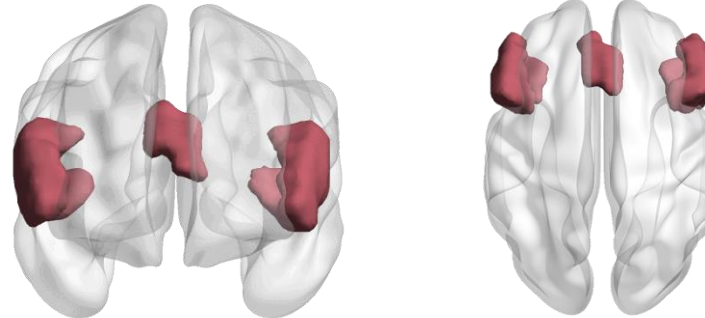
Positive Affect



Attention



Cognitive Control



Why hasn't fMRI reached the clinic?

Slow

- Long processing times
- Not compatible with clinical workflows

Specialized

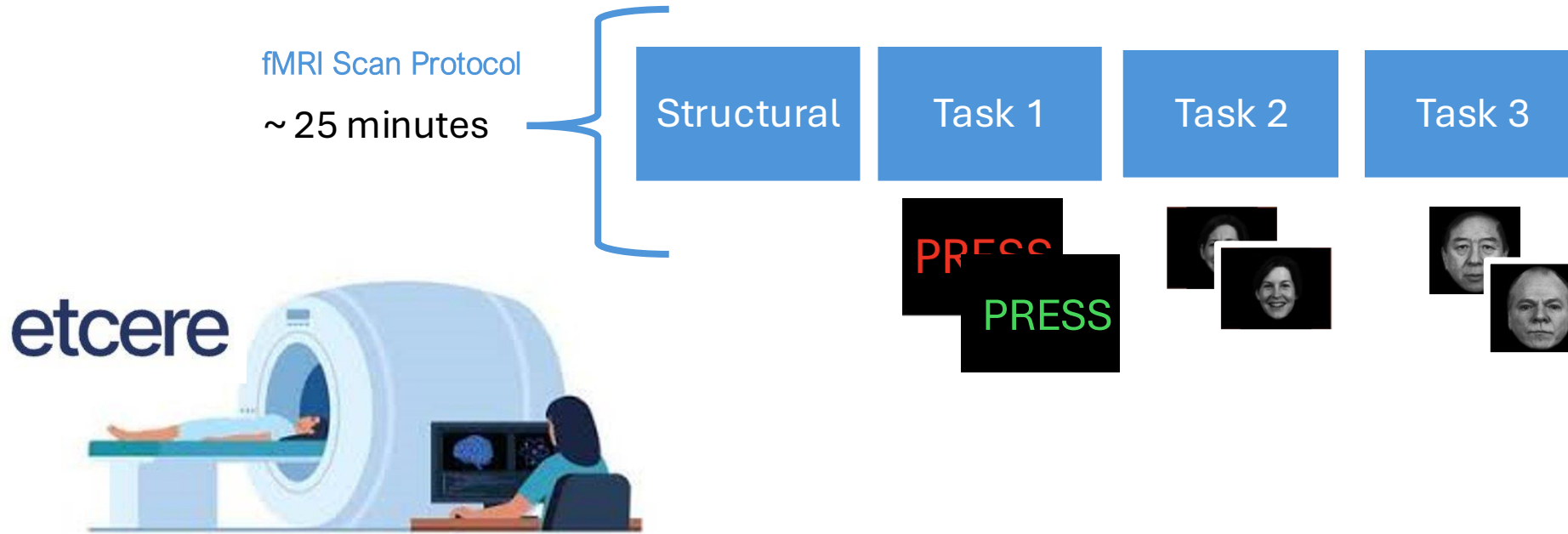
- Requires fMRI expertise
- Requires software & pipelines

Hard to Scale

- Difficult to standardize across sites
- High variability across scanners



EtCere: End-to-end system from scan acquisition to fMRI analysis



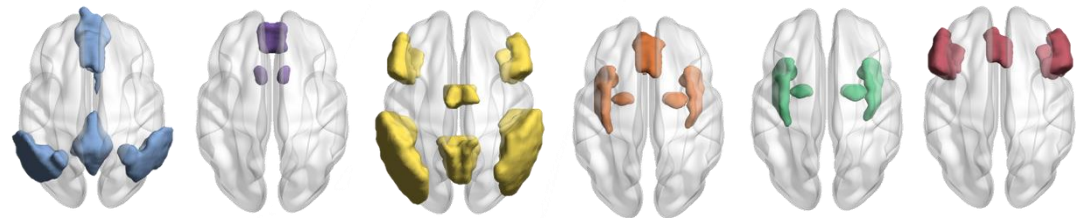
EtCere: End-to-end system from scan acquisition to fMRI analysis

fMRI Scan
~ 25 minutes

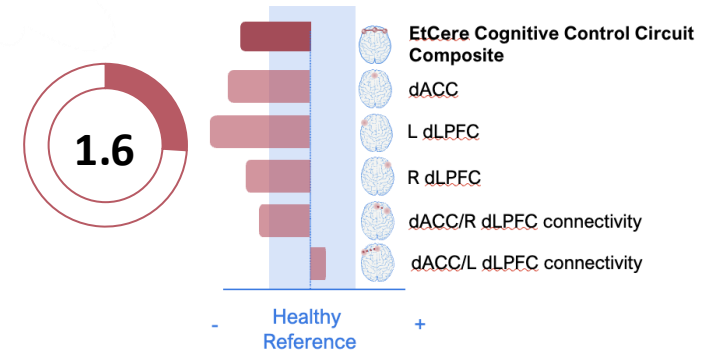
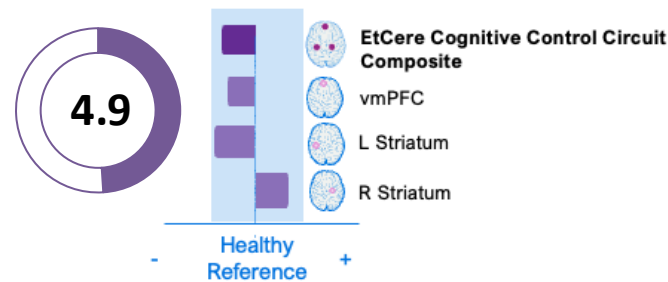
etcere



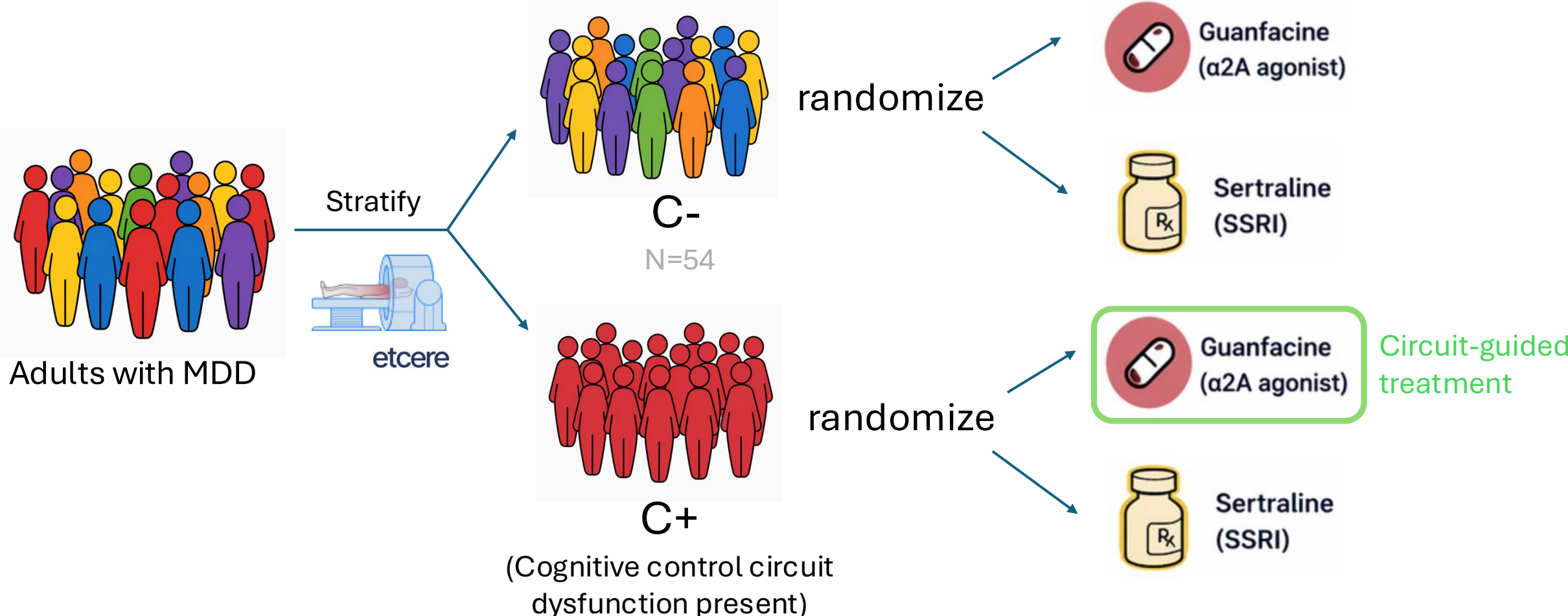
Results for the individual patient, normed to healthy reference sample
< 1 hour



+ QC metrics



ACE-D Aim 3 Protocol



etcere

Precision Mental Health
Powered by
Neuroscience

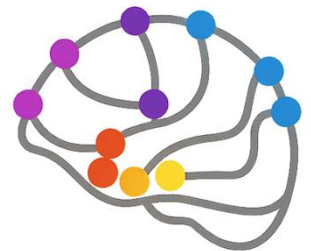
Visit Lara Foland-Ross's SOBP poster to learn more!

**Poster S113 Clinically Deployable fMRI Circuit
Profiling for Treatment Selection in Major Depression
Sat, 5/2 - 5:00 – 7:00 PM**



U01 MH136062

andreael@stanford.edu
info@etcere.ai



ACE-D STUDY
Stanford • UIC



Center for Precision
Mental Health

